

ICUnity: A software tool to harmonise the MIMIC-III and AmsterdamUMCdb databases

Emma Rocheteau^{1,2}, Jacob Deasy², Luca Filipe Roggeveen³ and Dr Ari Ercole⁴

¹School of Clinical Medicine, University of Cambridge; ²Department of Computer Science and Technology, University of Cambridge; ³Amsterdam University Medical Centre; ⁴Division of Anaesthesia, Department of Medicine, University of Cambridge

Problems of working with EHRs

- ▶ The quality of raw data is variable, creating significant pre-processing burden
- ▶ Lack of standardisation between datasets

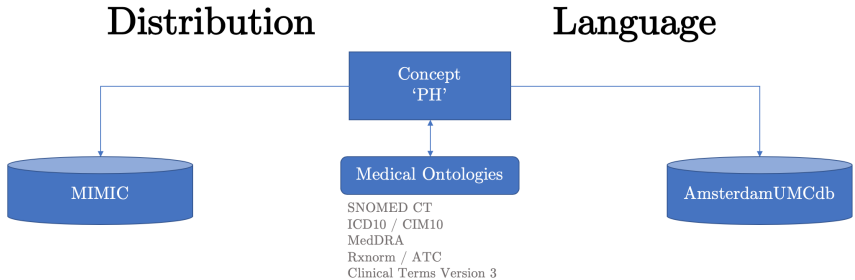
Research Question

Can we (partially) automate data mapping and feature pre-processing between clinical databases?

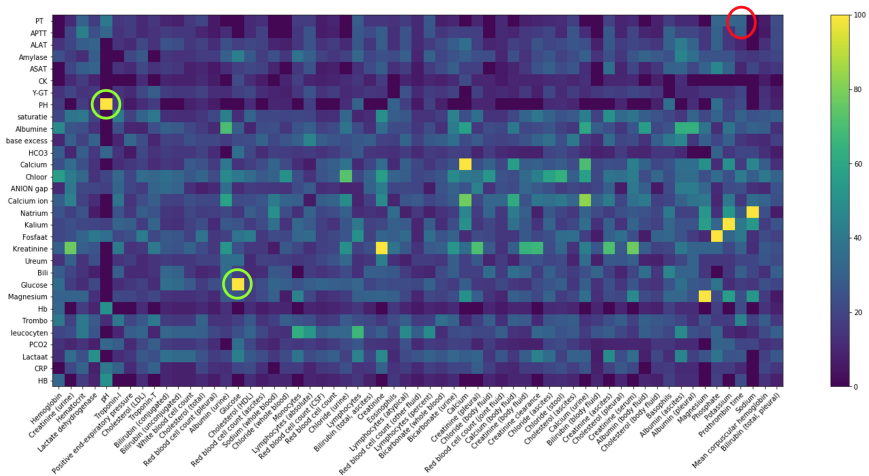
Specific Challenges

Problems	Examples
Different formats	MIMIC, eICU, AmsterdamUMCdb
Multiple & different label IDs	“HR”, “heartrate”, “pulse”
Different languages	“Hartslag” vs. “heartrate”
Different units	“Mmol/l” vs. “g/l”
Different sources	Blood pressure: femoral, radial
Numeric vs. string	5 vs. “>2”
Granularity	“20-30y” vs. “20”, “21” ...
Different distributions	Different populations

Data Harmonisation

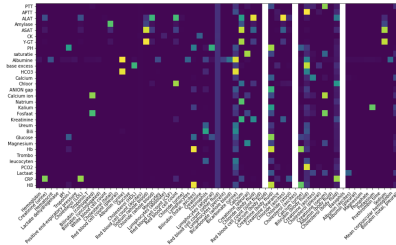


Matching based on names (string matching)

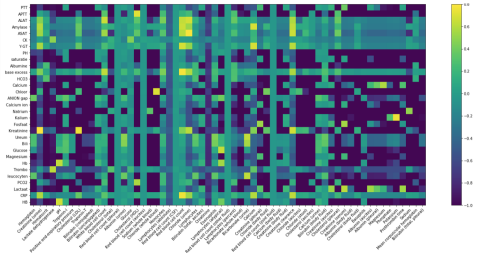


Matching based on data distribution

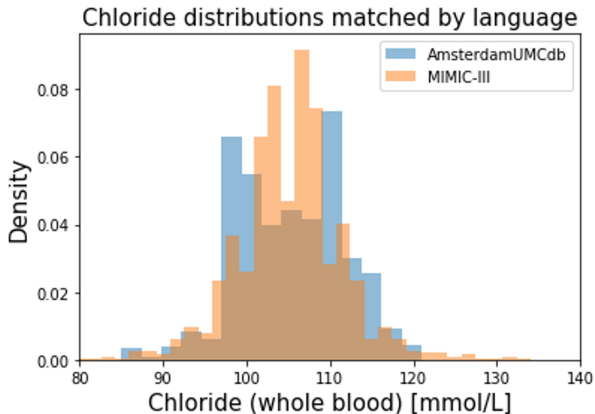
t-test



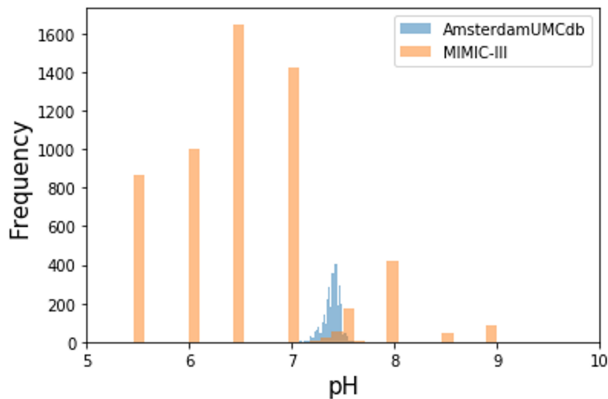
Normalised interquartile range overlap



Examples



Examples



Validation Tool

```
Is this a suitable match: Kreatinine, Creatinine (serum)
Confirm? [Y/N] or X to exit: yes
```

```
Is this a suitable match: Chloor, Chloride (urine)
Confirm? [Y/N] or X to exit: n
```

```
Is this a suitable match: Kreatinine, Creatinine (pleural)
Confirm? [Y/N] or X to exit: n
```

```
Is this a suitable match: Kreatinine, Creatinine (ascites)
Confirm? [Y/N] or X to exit: no
```

```
Is this a suitable match: Albumine, Albumin (urine)
Confirm? [Y/N] or X to exit: exit
```

```
[28] print('Saved Matches:')
     print(matches)
     print('Non Matches:')
     print(non_matches)
```

```
☐ Saved Matches:
[[ 'PH', 'pH'], ['Calcium', 'Calcium'], ['Natrium', 'Sodium'], ['Kalium', 'Potassium'], ['Fosfaat', 'Phosphate'], ['Kreat
Non Matches:
[['Calcium ion', 'Calcium (urine)'], ['Calcium ion', 'Calcium'], ['Kreatinine', 'Creatinine (urine)'], ['Chloor', 'Chlor
```

Thank you!

Code Link:

<https://github.com/EmmaRocheteau/ICUnity>